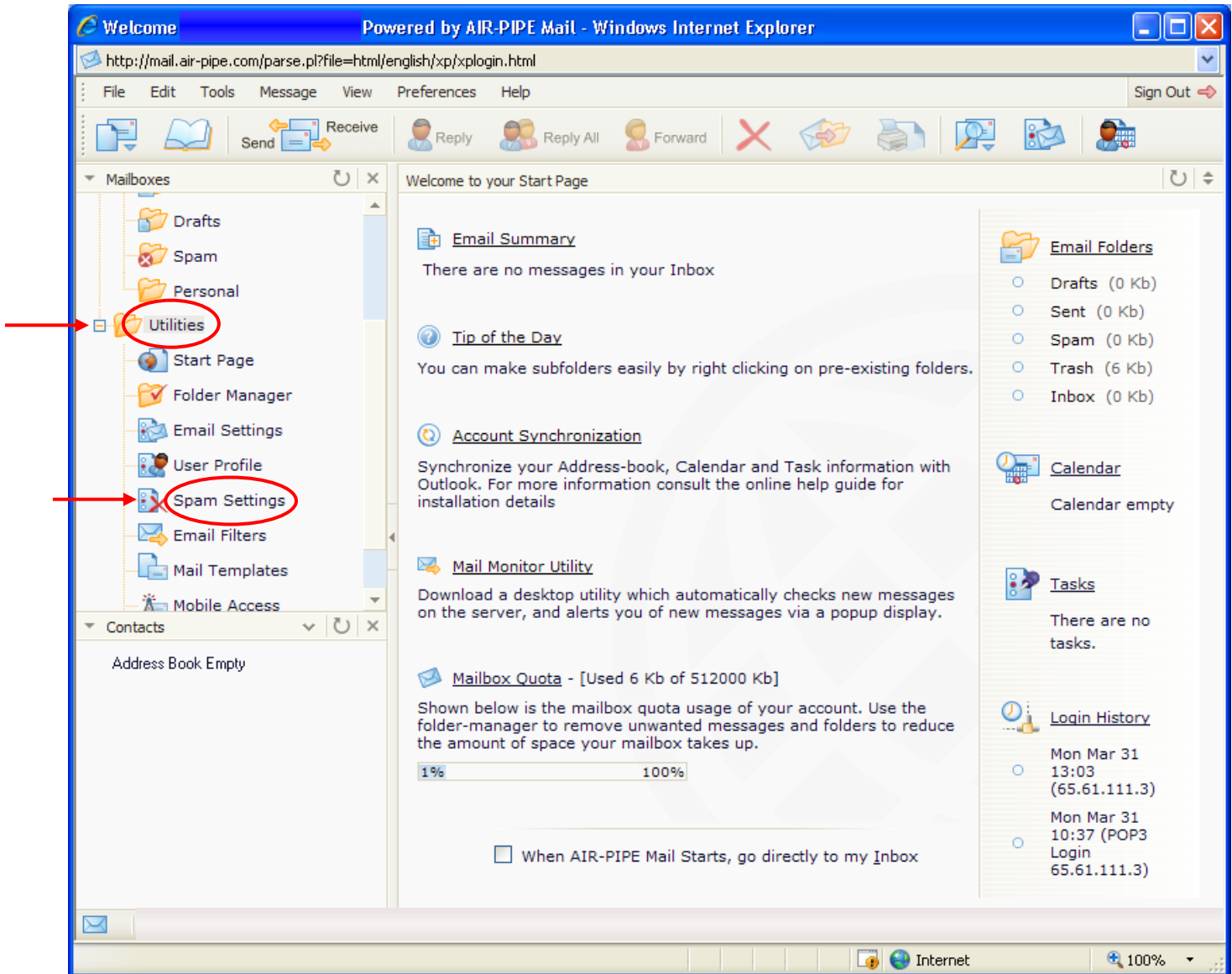




## Adjusting Your AIR-PIPE Email Spam Settings

- Login to <http://mail.air-pipe.com>
- Click on the **Utilities** folder on the left, and then on **Spam Settings**



Here you will find multiple options and tabs for Spam filtering and security:

**Spam Detection Level** – Automatically detects spam. (Set to 2 or 1 for best performance)

**Spam Treatment** – Choose to mark messages as Spam, Move to Spam Folder, or bounce (reject) message

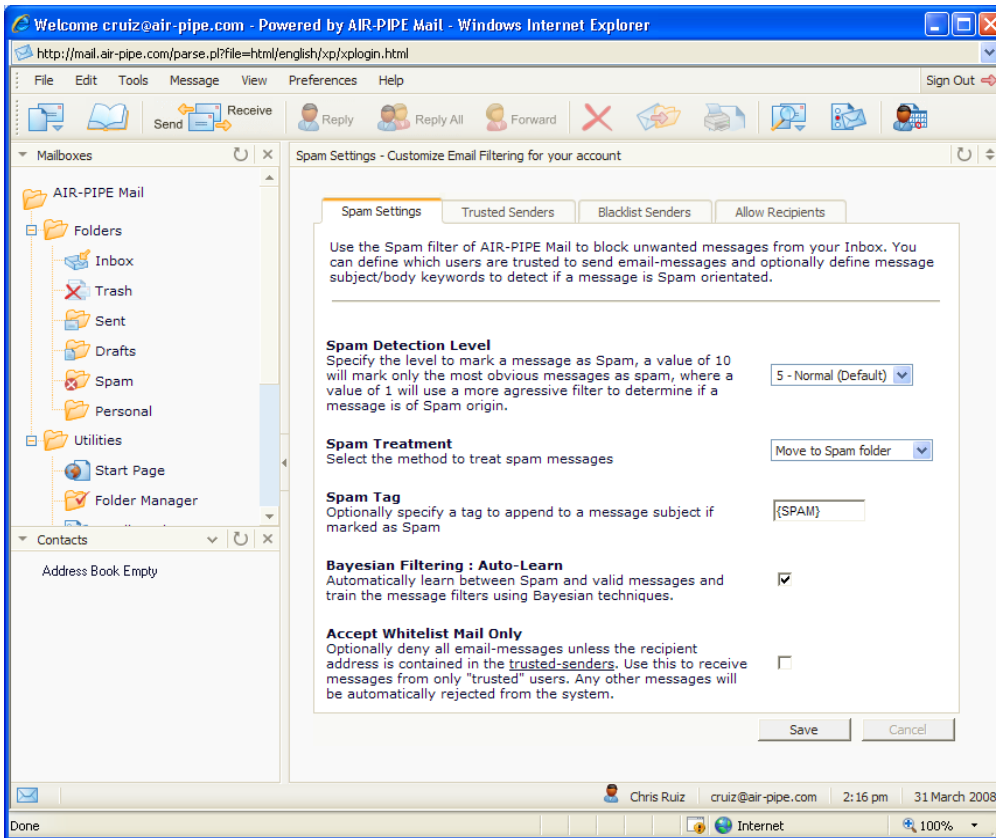
**Spam Tag** – Indicator tag attached to messages marked as Spam

**Bayesian Filtering:Auto Learn** – Trains your account to recognize spam based on messages that are manually marked as Spam

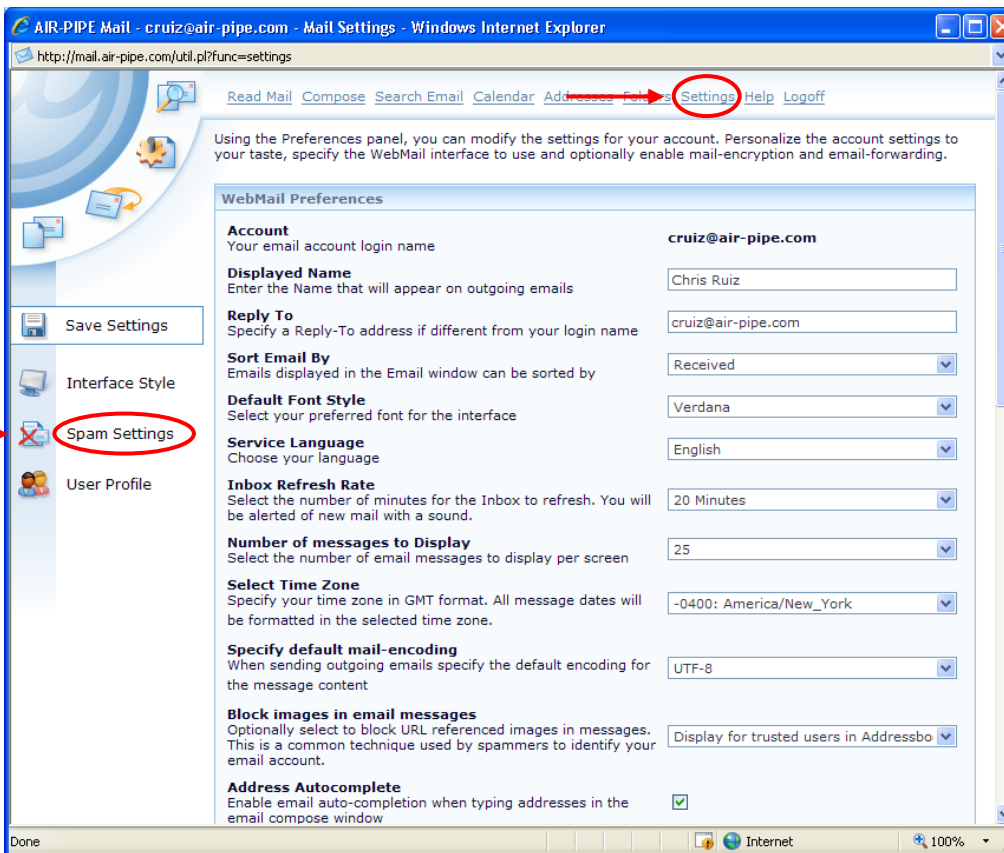
**Accept Whitelist Mail Only** – Only allows messages from senders on your “Trusted Senders” list. All other messages will be rejected

**Blacklist Senders** – List of email addresses/senders that are blocked. If you do not want to receive anymore mail from specific addresses, add them to the Blacklist.

**Allow Recipients** – If an email address on this list appears in the To, CC or BCC line then you will automatically receive it, bypassing any filter you have in place



- If you are using the Simple Interface, then your options will be a bit different. When you login, click on **Settings** along the top and then on **Spam Settings** along the left side



- Here you will find all the same Spam options, laid out top to bottom instead of in a tab format.
- Adjust your settings according to your preferences.